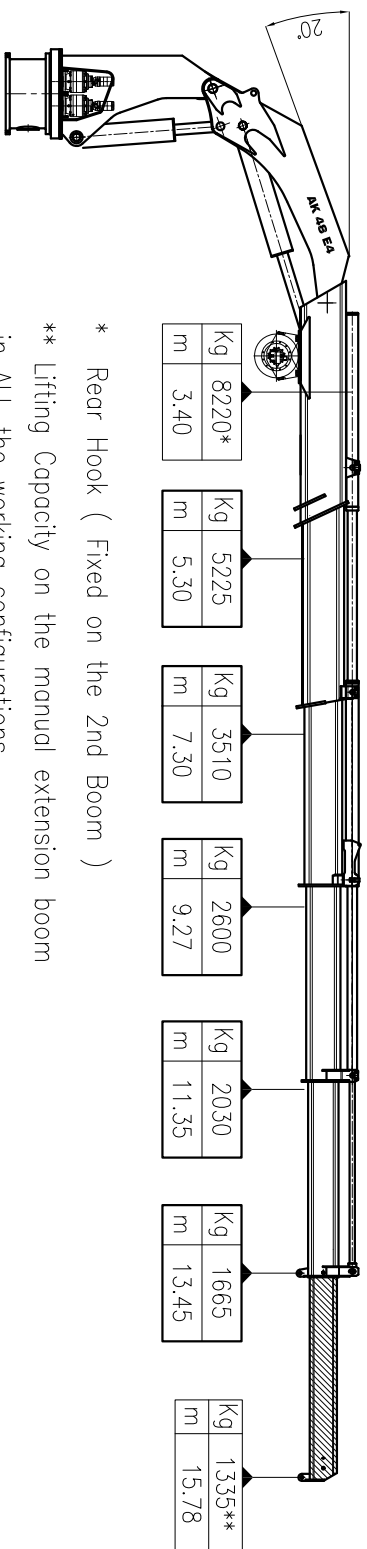


Marine Crane type AK 48 E4+1ME



* Rear Hook (Fixed on the 2nd Boom)

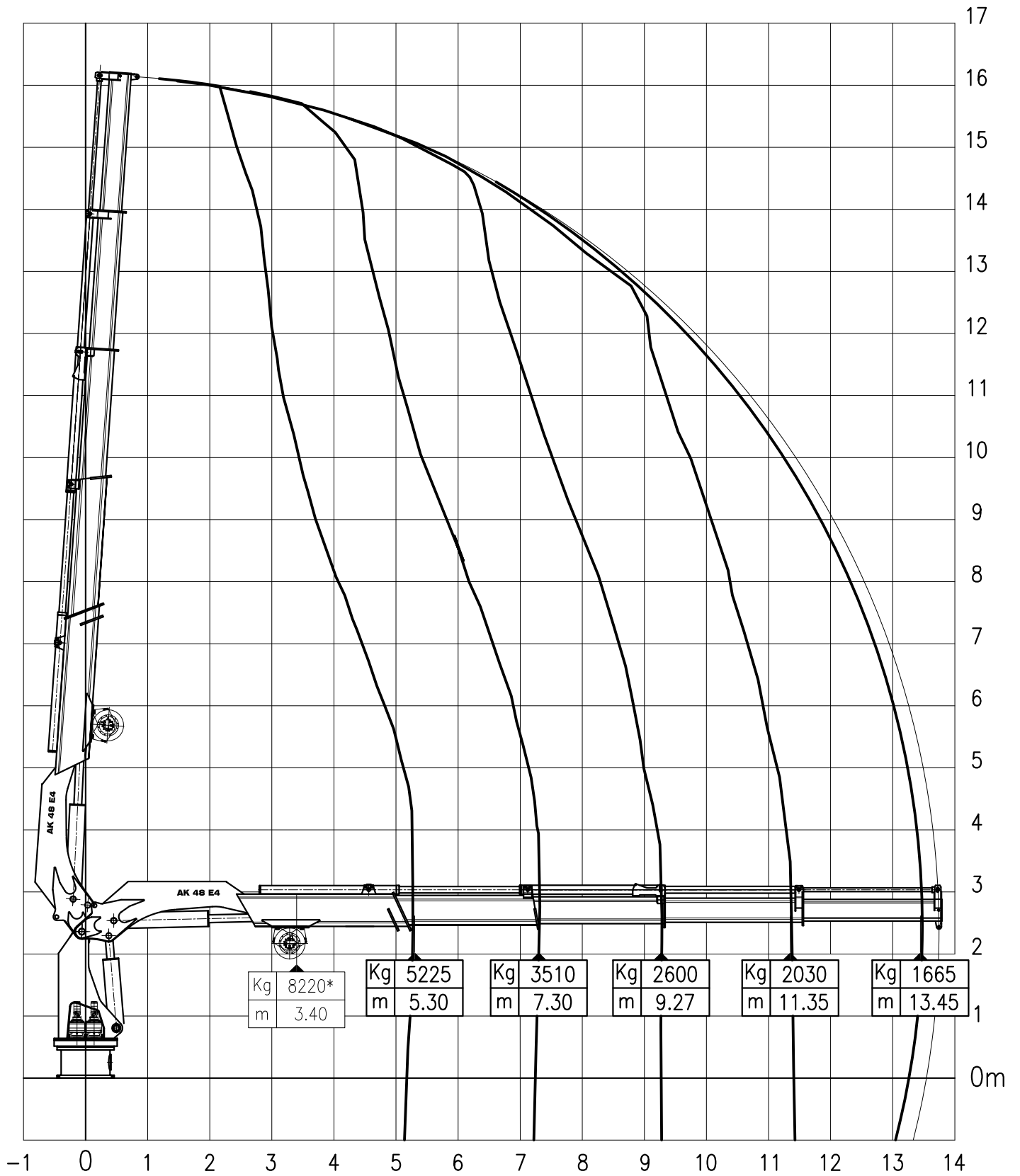
** Lifting Capacity on the manual extension boom
in ALL the working configurations

WORKING DIAGRAM with HOOK
(Max.permitted heel/trim 7°/2°)

HS Marine

WORKING DIAGRAM with HOOK
 (Max.permitted heel/trim 7°/2°)

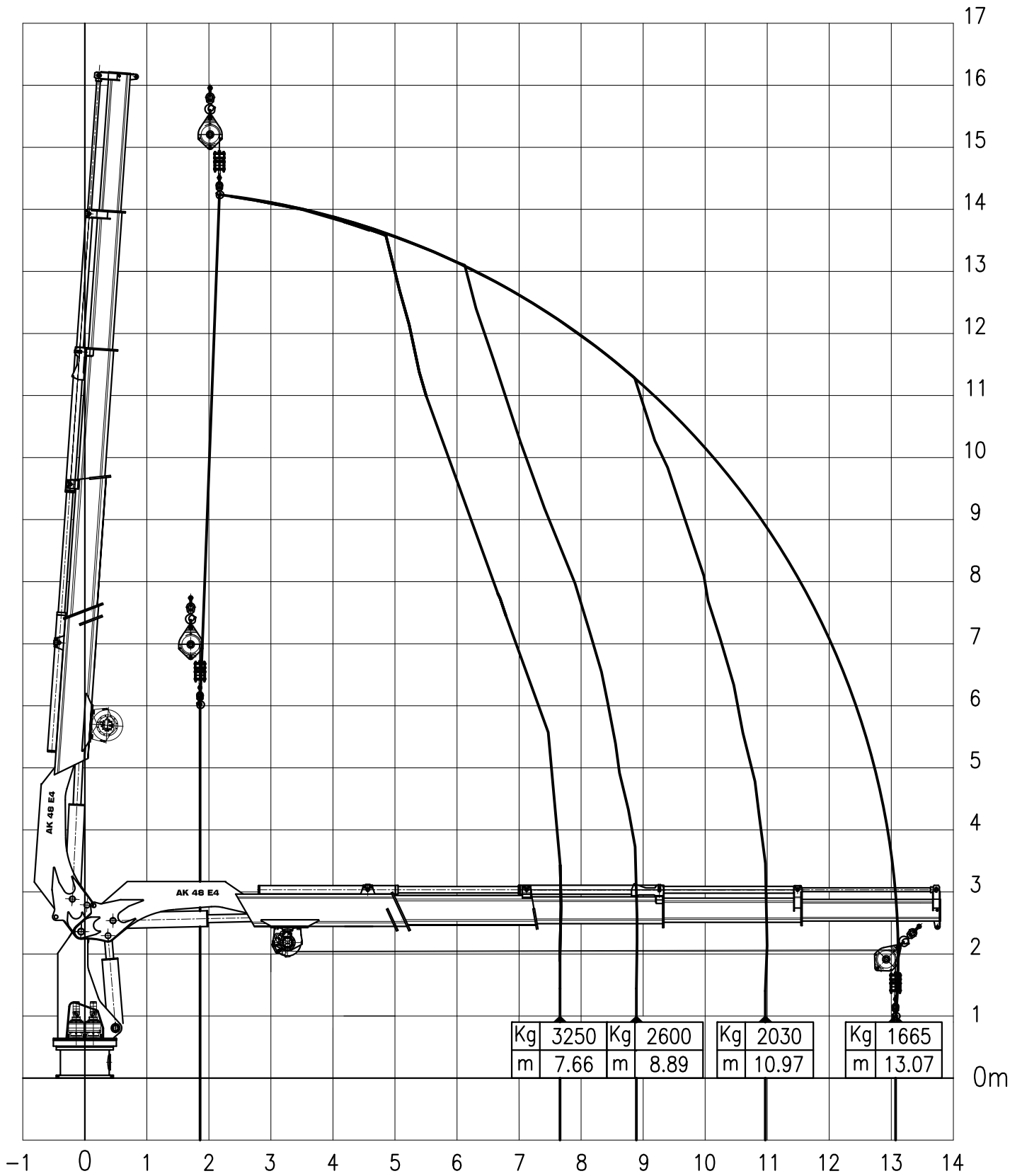
HS.Marine



Marine Crane type AK 48 E4

WORKING DIAGRAM with WINCH
 (Max.permitted heel/trim 7°/2°)

HS.Marine



Marine Crane type AK 48 E4