

Coastworks

Coastworks Operations Ltd
8 Allanton Park Terrace
Fairlie
Ayrshire KA29 0AW

Tel: +44 (0) 1475 568572
Fax: +44 (0) 1475 568153



CW-2

Road transportable pontoon barge

Dimensions: All 16 sections = 18m x 8.5m x 0.73m

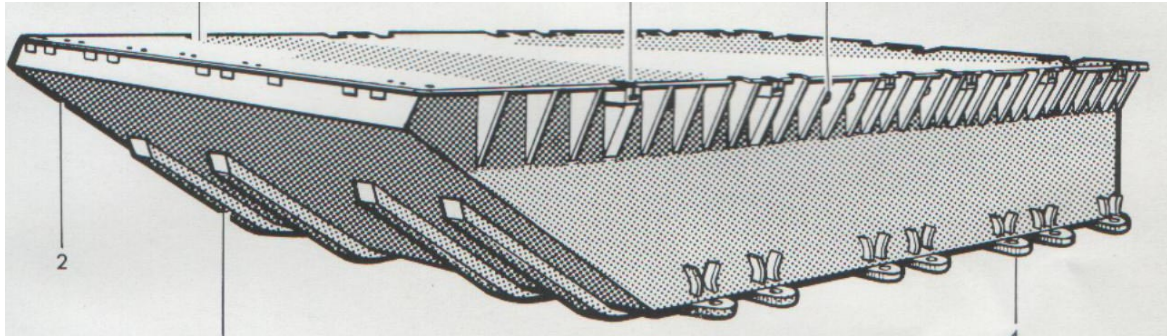
Load Capacity: 2.5t per section; all 16 sections = 40t

Accessories: 4 x 6m long winch operated spudlegs
4 point mooring system
Moonpool

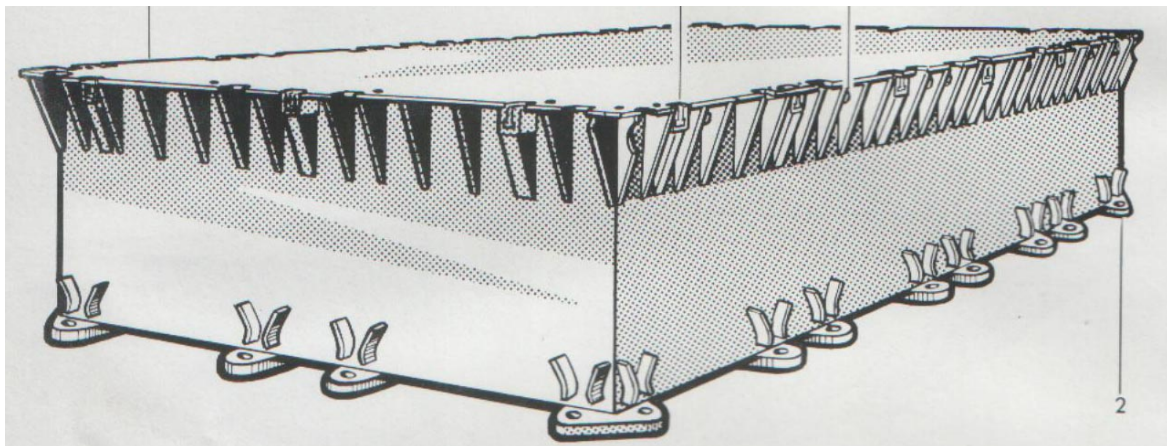


Coastworks

CW-2 sections



Type: Scow section - 4.75m x 2.1m x 0.73m
Weight: 1.250 Kg
Max cargo: 2.500 Kg with 25 cm freeboard
Number: 8 sections



Type: Centre section - 4.2m x 2.1m x 0.73m
Weight: 1.185 Kg
Max cargo: 2.500 Kg with 25 cm freeboard
Number: 8 sections