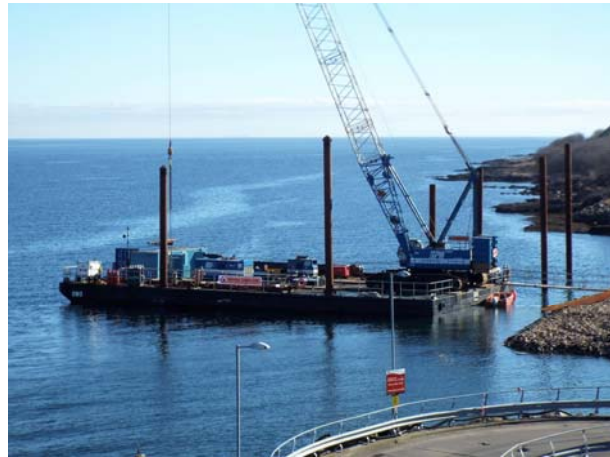


Coastworks

Coastworks Operations Ltd
8 Allanton Park Terrace
Fairlie
Ayrshire KA29 0AW

Tel: +44 (0) 1475 568572
Fax: +44 (0) 1475 568153



CW-3 Crane Barge

Full MCA UK Loadline

A flat top, welded steel pontoon barge with multiple internal compartments. Built with a forward scow and an aft vertical end plate, this pontoon was fully overhauled & recertified in 2015.

Dimensions:	34.3m x 18.9m x 2.74m
Max deck cargo:	940t @ 7m ²
Spudlegs:	2 x 16m long x 610mm Ø
Maximum Crane:	200t crawler crane
GT:	530t
Sub Division:	18 watertight compartments with flush hatches
Stability book:	Stability book approved by MCA
Deck equipment:	2 x smit towing brackets, 4 x fairleads, 8 x bollards, crane boom trestle.
Optional:	Hydraulic spudleg lifting system 23m spudlegs Hydraulic winches Anchors Assisting tug Safety boat

Coastworks

CW-3 barge

