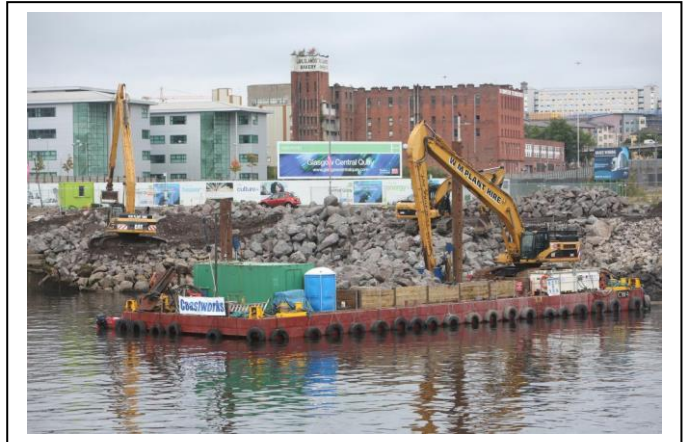


Coastworks

Coastworks Operations Ltd
8 Allanton Park Terrace
Fairlie
Ayrshire KA29 0AW

Tel: +44 (0) 1475 568572
Fax: +44 (0) 1475 568153



CW-4 Dredging Barge

Bureau Veritas I + Hull Pontoon / NP Unrestricted Navigation

Full BV International Loadline

A flat top, steel pontoon barge with multiple internal sub divided compartments. Built with a forward scow and an aft vertical end plate, this pontoon was built and launched in 2000 by Neptune Shipyards BV.

Dimensions:	30m x 11.2m x 2.5m
Spudlegs:	2 x 22m x 610mm Ø hydraulically operated
Max deck cargo:	400t @ 6tm ²
Max excavator:	CAT 365 - 82t excavator with 23m arm
Sub division:	8 watertight compartments with flush hatches
Stability book:	Stability book approved by MCA
Deck equipment:	4 x fairleads, 6 x bollards
Optional:	Welfare cabin, generator, 4 point mooring

Coastworks

